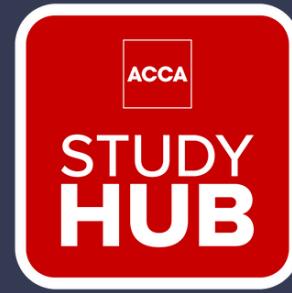


first intuition   
learning solutions



After months in the making, we are excited to announce the arrival of our new **ACCA EDGE Courses**. EDGE courses introduce ACCA's official StudyHub content integrated into our online course packages, to create a truly unique and complete learning solution for your ACCA students.

FI's online courses are recognised globally for their comprehensive syllabus coverage and world-class learning materials - and now, with the inclusion of ACCA's learning content, we will add even greater value to students studying with our international partners.

## The importance of StudyHub resources?



ACCA's Study Text covers the whole syllabus, offering the most relevant single reference point for all deeper syllabus and subject area learning



ACCA question practice and quizzes to reinforce knowledge and comprehension as students progress.



Flashcards are essential visual revision aids to increase familiarisation, written by ACCA's content creation team

## What does this mean for your students?



Single-source learning - all learning and official content in one platform



Combined support from both the examining body and an award-winning online provider



[www.filearningsolutions.com](http://www.filearningsolutions.com)

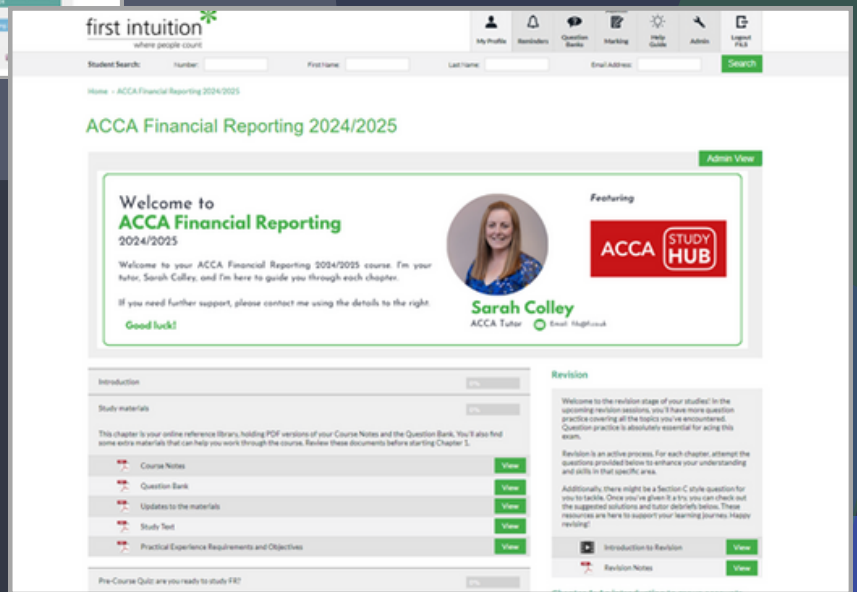
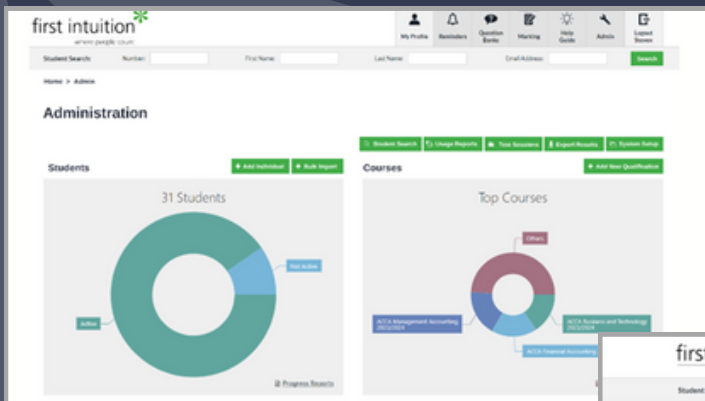
follow us on  [LinkedIn](#)



[files@fi.co.uk](mailto:files@fi.co.uk)

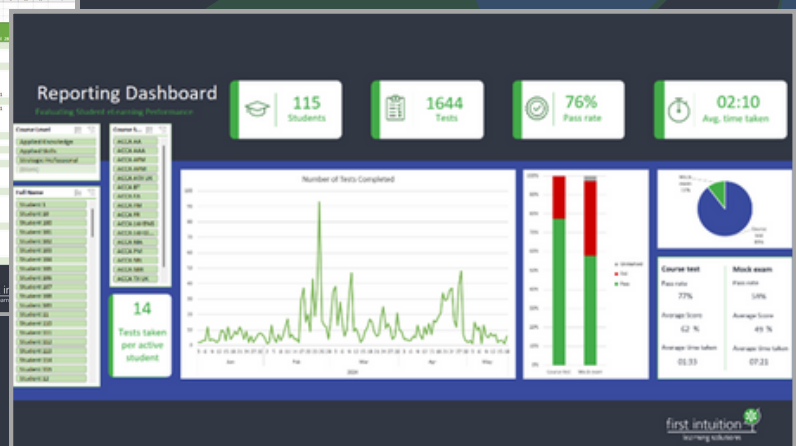
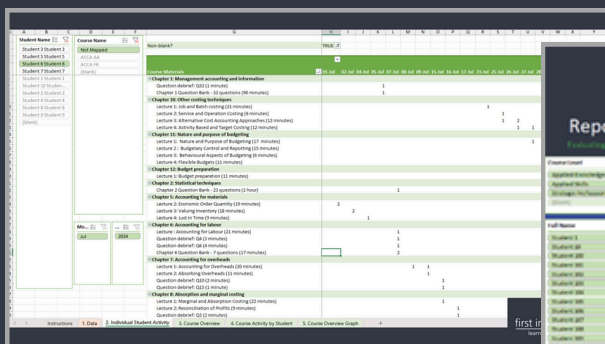
# FILS Platform Solutions

New ACCA EDGE courses are delivered within your own branded platform, offering integrated course architecture, student management functionalities, and award-winning content and exam practice.



## New Data Analytics

As an added feature of EDGE, we have introduced new data analysis tools and student reporting functionality to support student performance and progression.



ACCA EDGE brings together the best of FI and ACCA resources. So if you're looking for an edge in your market, speak to us today.

The FILS Team.



[www.filearningsolutions.com](http://www.filearningsolutions.com)

follow us on LinkedIn



[files@fi.co.uk](mailto:files@fi.co.uk)

